

Amplitude and Frequency-modulated Stimuli Activate Common Regions of Human Auditory Cortex

Heledd C. Hart, Alan R. Palmer and Deborah A. Hall

MRC Institute of Hearing Research, University Park,
Nottingham NG7 2RD, UK

Hall *et al.* (Hall *et al.*, 2002, *Cerebral Cortex* 12:140–149) recently showed that pulsed frequency-modulated tones generate considerably higher activation than their unmodulated counterparts in non-primary auditory regions immediately posterior and lateral to Heschl's gyrus (HG). Here, we use fMRI to explore the type of modulation necessary to evoke such differential activation. Carrier signals were a single tone and a harmonic-complex tone, with a 300 Hz fundamental, that were modulated at a rate of 5 Hz either in frequency, or in amplitude, to create six stimulus conditions (unmodulated, FM, AM). Relative to the silent baseline, the modulated tones, in particular, activated widespread regions of the auditory cortex bilaterally along the supra-temporal plane. When compared with the unmodulated tones, both AM and FM tones generated significantly greater activation in lateral HG and the planum temporale, replicating the previous findings. These activation patterns were largely overlapping, indicating a common sensitivity to both AM and FM. Direct comparisons between AM and FM revealed a higher magnitude of activation in response to the variation in amplitude than in frequency, plus a small part of the posterolateral region in the right hemisphere whose response was specifically AM-, and not FM-, dependent. The dominant pattern of activation was that of co-localized activation by AM and FM, which is consistent with a common neural code for AM and FM within these brain regions.

Introduction

Communication signals and other everyday sounds change in frequency and amplitude on a moment-to-moment basis. As a first step in understanding the way in which the auditory system processes such spectrally and temporally complex sounds, responses have been studied to simpler stimuli which allow selective manipulation of specific features of the acoustical waveform. Sinusoidally modulating either the frequency or amplitude of a sound generates a well controlled stimulus in which the temporal characteristics are determined by the modulating waveform.

Previous functional magnetic resonance imaging (fMRI) studies have investigated brain responses to acoustical signals that are sinusoidally modulated in frequency (Hall *et al.*, 2002) or amplitude (Giraud *et al.*, 2000) by contrasting them against their unmodulated counterparts. Hall *et al.* (Hall *et al.*, 2002) used single-frequency and harmonic-complex tones. Activation by these frequency-modulated tones was greater than by the unmodulated tones in bilateral Heschl's gyrus (HG), anterolateral and posterolateral parts of superior temporal gyrus (STG), and superior temporal sulcus (STS). An especially high response to the frequency-modulated harmonic-complex tone was reported in the posterolateral region. Giraud *et al.* (Giraud *et al.*, 2000) also found stronger auditory activation to amplitude modulated white noise than to unmodulated noise. This differential activation was located bilaterally in primary and non-primary areas, but was strongest in posterolateral regions of the STG and STS.

Neuroimaging studies have investigated the effects of temporal variation by using other types of sounds that are not sinusoidally modulated. Again, their findings converge on the importance of non-primary auditory activation in the analysis of temporally varying sounds. Binder *et al.* (Binder *et al.*, 2000) used fMRI to study responses to the effects of spectral variation using sequences of single-frequency tones that stepped in frequency by at least 10 Hz, every 666 ms (i.e. at a rate of 1.5 Hz). Non-primary posterolateral areas were more strongly activated by the tones whose frequency changed over time than to unmodulated white noise.

The following studies using positron emission tomography (PET) also indicate an important role for bilateral posterolateral non-primary auditory regions in the processing of temporally varying sounds. Thivard *et al.* (Thivard *et al.*, 2000) studied cortical responses to synthetic sounds that were similar to vocal sounds in structure, with spectral maxima that were modulated in time. Relative to matched signals that had a stationary spectral profile, spectrally varying sounds generated bilateral auditory cortical activation that was posterior to the lateral extension of HG. Griffiths *et al.* (Griffiths *et al.*, 1998) manipulated the time structure in sounds by presenting a sequence of binaural pitches that either had tuneful pitch variations (melodies) or no melody. An effect of melody was reported in bilateral non-primary auditory areas in the posterolateral and anterior parts of the STG. Griffiths *et al.* hypothesize that these areas are involved in the general analysis of sound sequences. Zatorre and Belin (Zatorre and Belin, 2001) have studied the response to spectral and temporal variation by systematically manipulating the frequency and timing information in a sequence of single-frequency tones. Spectral variation involved tone sequences that varied in the spacing of their frequency components (from one octave to 1/32 octave frequency separation), but with a fixed rate of change between tones. Temporal variation involved tone sequences that varied in the rate of change (from 1.5 to 48 Hz) between two fixed frequencies. This parametric study is conceptually different from the studies described so far (Giraud *et al.*, 2000; Thivard *et al.*, 2000; Hall *et al.*, 2002) in that there is no unmodulated baseline stimulus and so spectral and temporal conditions must be compared against one another. When temporal conditions were subtracted from spectral conditions, a greater response to spectral changes was found in bilateral non-primary auditory areas, but in anterior, not posterior, STG.

Physiological and psychophysical methods have been used to investigate whether the basis of AM and FM processing involves neural mechanisms that are separate or shared. Both alternatives have received empirical support. 'Selective adaptation' studies have provided evidence that AM and FM stimuli are processed independently by parallel pathways in the auditory system (Regan and Tansley, 1979; Kay, 1982). These studies show that exposure to FM tones elevates the psychophysical detection

threshold of FM, but not AM, tones. Similarly, exposure to AM increases the AM detection threshold, without affecting the FM threshold. Based on this evidence, and the fact that FM can easily be distinguished from AM at most modulation rates, the authors postulate separate processing channels for AM and FM. However, Wakefield and Viemeister (Wakefield and Viemeister, 1984) have questioned the interpretation of these adaptation studies and suggest that the observed effects reflect changes in the decision strategy of the subjects rather than the existence of AM and FM specific channels.

Mäkelä *et al.* (Mäkelä *et al.*, 1987) measured auditory cortical evoked magnetic fields to AM and FM tones, presented in pairs separated by 500 ms in four different combinations (FM-AM, FM-FM, AM-FM, AM-AM). They found that the decrease in response amplitude from the first to the second response was significantly smaller for pairs with non-identical stimuli, and thus suggest that the neuronal populations activated by AM and FM differ. They report only very small differences in the observed source locations for FM and AM, indicating that the activated cell populations partly overlap or intermingle; or that the differentiation of responses is already made at more peripheral stations of the auditory pathway.

Different responses to FM and AM tones have been observed within single cells of the cochlear nucleus and inferior colliculus of the rat (Møller, 1971; Rees and Møller, 1983). Physiological data about the specificity of auditory cortical responses to FM and AM is less well understood. In the auditory cortex of awake cat, some neurons respond more strongly to changing stimulus frequencies than to constant frequency sounds (Whitfield and Evans, 1965). In anaesthetized cats, a spatial segregation of units responsive to the rate of FM has been measured along the isofrequency axes of the primary auditory cortex, but the distribution was variable across cats (Heil *et al.*, 1992; Mendelson *et al.*, 1993). In monkey auditory cortex, some neurons respond selectively to AM sounds presented at 2–32 Hz (Urbas *et al.*, 1986). Analogous neuronal populations in human auditory cortex could form a basis for psychophysical channels selectively sensitive to changes of frequency and amplitude.

In contrast, other psychophysical and physiological studies have supported the theory that AM and FM are processed by a common neural code. Saberi and Hafter (Saberi and Hafter, 1995) postulate that FM information is transduced at a relatively early stage in the auditory system so that a frequency change is transmitted as a change in amplitude, resulting in both AM and FM coding occurring by phase-locking of auditory afferents to the modulation envelopes. This view is based on the ability of human subjects to perceive a single image in the head depending on the phase difference between an FM sound presented to one ear and an AM sound with the same modulation rate and carrier to the other ear. Observers were able to accurately localize the position of this intracranial image, suggesting that the cues provided by these sounds were not affected by use of a different type of modulation at the two ears and therefore that coding for the two modulation types is similar, at least at neural relays above the brainstem where binaural convergence takes place. Other evidence suggesting a common mechanism for modulation rate comes from neurophysiological data obtained from rats, cats and marmosets showing that best modulation frequencies of single primary auditory cortical units are significantly correlated for AM and FM (Eggermont, 1994; Gaese and Otswald, 1995; Liang *et al.*, 2002). Liang *et al.* (Liang *et al.*, 2002) report that, in the primary auditory cortex of awake marmosets, individual cortical neurons, as well as populations of neurons, have common

features in their discharge rate and synchrony-based responses to both sinusoidal AM and FM.

Imaging studies indicate that sounds which vary in frequency and in amplitude over time *both* activate non-primary auditory cortex when compared with unmodulated stimuli, particularly in the posterolateral region (Griffiths *et al.*, 1998; Giraud *et al.*, 2000; Thivard *et al.*, 2000; Hall *et al.*, 2002). However, the hypothesis that this brain region is involved in processing both types of modulation has never been directly tested in an imaging study. Some studies have actually confounded AM within the FM stimulus by using a sequence of tone bursts that were pulsed on and off during the stimulation (Binder *et al.*, 2000; Hall *et al.*, 2002). Studies that specifically seek to segregate responses to AM and FM must therefore use non-pulsed, continuous stimuli to avoid stimuli that have both AM and FM components.

The auditory cortex responds to many different stimulus features which must be carefully controlled in subtraction paradigms. It is important that responses attributed to the AM or FM components of the stimulus are actually due to the modulation and not due to some other stimulus characteristic. The rate of modulation is an important factor in determining the response, especially its shape. For low rates of amplitude variation (e.g. 1.5 Hz), the fMRI response shows a sustained response over the stimulation period, but higher rates of variation (e.g. 48 Hz) evoke a transient response to the stimulus onset that decays over the period of stimulation (Giraud *et al.*, 2000; Harms and Melcher, 2002). Sound level is an additional factor that determines the magnitude and extent of the auditory response (Hall *et al.*, 2001; Brechmann *et al.*, 2002). fMRI evidence indicates that for conservative comparisons between different types of sounds, the component levels of those sounds should be matched for loudness, rather than root mean square power (Hall *et al.*, 2001). The carrier signal can also influence the robustness of the activation. For example, Hall *et al.* (Hall *et al.*, 2002) showed that the effect of FM was more reliably seen using a harmonic-complex carrier, compared to a single frequency carrier, but was nevertheless significantly present for both carrier signals. Thus, a simple way to control for the characteristics of the carrier is to ensure that the effects of AM and FM generalize across different carrier signals.

In the present study, we use 3 T fMRI to investigate whether or not the response to modulation is dependent on the characteristic of modulation (i.e. frequency or amplitude), for carrier signals presented at the same sound level and rate of modulation. Two issues of particular interest are (i) whether the same auditory areas are sensitive to both AM and FM (i.e. that they are more activated by both types of modulation relative to unmodulated sounds), and (ii) whether any auditory area responds specifically to one type of modulation and not to the other, indicated by a spatial segregation of the responses.

Materials and Methods

Stimuli

The stimuli were synthesized at a sampling frequency of 48 kHz using two carrier tones: a 300 Hz single tone and a harmonic-complex tone. The harmonic-complex tone had a 300 Hz fundamental and consisted of four harmonics at 300, 600, 900 and 1200 Hz. A 300 Hz tone was chosen to be distant from the frequency of peak energy of our scanner noise [1.92 kHz, plus higher harmonics (Hall *et al.*, 2000)]. Crossing carrier signal (single frequency and harmonic complex) by modulation (unmodulated, AM, FM) generated six stimulus conditions, plus a silent baseline condition (see Fig. 1*(i)*). Each tone was presented continuously for 6.8 s, rather than pulsed, so that the AM was not introduced into the FM stimuli. The carrier signal, $x(t)$, was either not modulated:

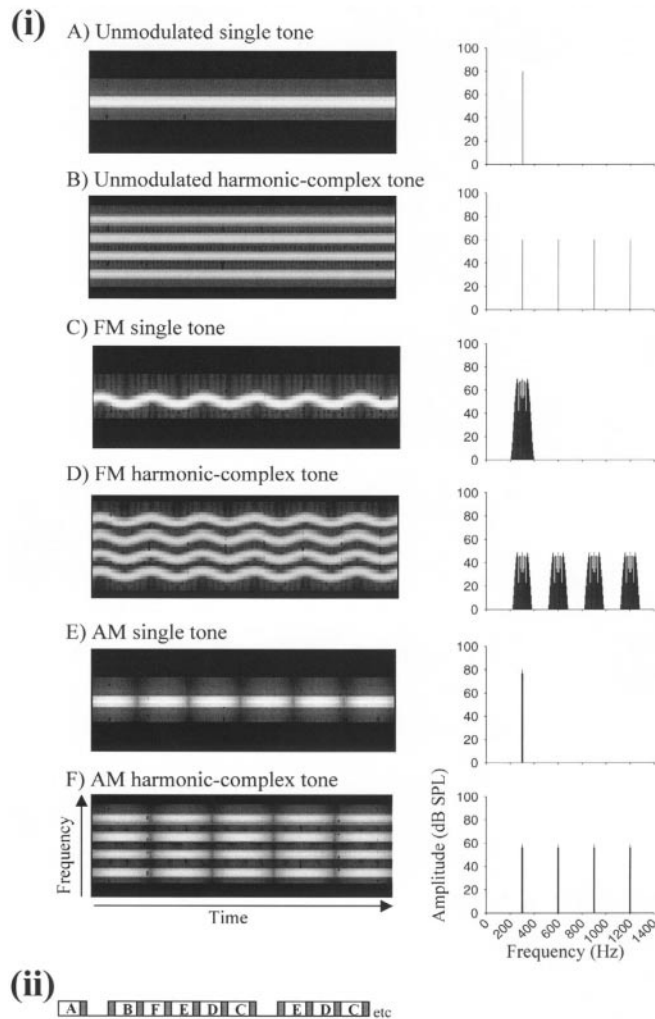


Figure 1. (i) The left column shows spectrograms of a 1 s section of the six stimuli used. Frequency is represented on the vertical axis with time on the horizontal axis. The sound level of the stimuli, at each point in frequency and time, is represented by the brightness of the greyscale. (A) Unmodulated, 300 Hz tone, (B) unmodulated, harmonic-complex tone, (C) frequency-modulated, 300 Hz tone, (D) frequency-modulated, harmonic-complex tone, (E) amplitude-modulated, 300 Hz tone, and (F) amplitude-modulated, harmonic-complex tone. The right column shows the frequency spectra of the same stimuli, with the amplitude of each component on the vertical axis, and frequency on the horizontal axis. (ii) Experimental design illustrating the presentation of stimuli (labelled blocks), interspersed with image acquisition (shown by the grey blocks).

$$x(t) = A_c \sin(2\pi f_c t),$$

frequency modulated sinusoidally at a rate f_m of 5 Hz and a depth of 10 (50 Hz):

$$x(t) = A_c \sin[2\pi f_c t + \beta \cos(2\pi f_m t)]$$

or amplitude modulated sinusoidally at a rate f_m of 5 Hz and a depth m of 1 (100%):

$$x(t) = A_c \sin(2\pi f_c t) [1 + m \cos(2\pi f_m t)]$$

where A_c and f_c are the amplitude and frequency, respectively, of the carrier component. Modulation depths were chosen to produce highly perceptible AM and FM that had been shown, in previous studies, to generate robust auditory activation (Giraud *et al.*, 2000; Hall *et al.*, 2002). For AM, $m = 1$ was used (100% AM). An FM modulation depth of 50 Hz (where $\beta = 10$; the modulation depth divided by the modulation rate)

was the same as that used by Hall *et al.* (Hall *et al.*, 2002). For harmonic-complex tones, use of $\beta = 10$ prevents the upper sidebands of one harmonic from overlapping with the lower sidebands of the next harmonic. The AM and FM stimuli were informally matched by an experienced listener to be approximately matched for modulation depth. The principal frequency components and the sidebands generated by modulation are shown in Figure 1(i) for each stimulus. For AM, the frequency spectrum contains three components: the principal component is equal to f_c and two adjacent half-amplitude sidebands that occur at a distance equal to that of the f_m . Thus, for the 300 Hz tone, amplitude modulated at a rate of 5 Hz, the components are 295, 300 and 305 Hz. For FM, the spectrum has more sidebands (each separated by f_m) which again decrease in amplitude away from f_c . For 300 Hz FM tone with a modulation depth of 50 Hz, the principal component is 300 Hz plus 19 components on either side of the carrier. A 5 Hz modulation rate was specifically chosen because the auditory cortex generates a sustained response to stimuli presented at a rate of 4–8 Hz (Giraud *et al.*, 2000; Harms and Melcher, 2002). In addition, low modulation frequencies have an important psychological validity, being the most crucial for speech recognition (Houtgast and Steeneken, 1985).

The stimuli were generated at a loudness equal to that of the 300 Hz tone at 96 dB SPL and were matched using a computational model of loudness summation (Moore *et al.*, 1997) [see also (Moore *et al.*, 1999)]. The overall power of each stimulus at the ear was measured by mounting the fMRI headphone system on KEMAR (Burkhard and Sachs, 1975), equipped with a Brüel and Kjær microphone and measuring amplifier. These measurements revealed that the presentation level of the single tones was 96 dB SPL and the harmonic-complex tones was 83 dB SPL (± 0.5 dB).

fMRI Acquisition

Functional imaging was performed in 12 normally hearing subjects (seven females and five males), whose mean age was 26 years. The study was approved by the Nottingham University Medical School Ethics Committee and was undertaken with the understanding and written consent of each subject. We used a gradient echo EPI sequence ($T_R = 9$ s, $T_E = 24$ ms) on a 3 T scanner with a head gradient coil set and a transmit/receive volume head coil (Nova Medical Inc., Wakefield, MA). The voxel size was 3 mm isotropic. Sets of brain images were acquired at the transitions between stimulus conditions using a clustered volume acquisition protocol, such that all 32 brain slices were acquired in 2.2 s (Fig. 1(ii)). This sparse imaging method reduces the interference on auditory cortical activation from the intense background scanner noise (Hall *et al.*, 1999). Furthermore, a pilot study using these stimuli, demonstrated that the 6.8 s silent period between volume acquisitions ($T_R = 9$ s) materially improved the sensitivity of detecting auditory cortical activation compared with an acquisition protocol in which the silent interval was 4.2 s ($T_R = 6$ s). The first two subjects to be scanned performed a gap detection task to maintain their arousal and attention to the stimuli. Each 6.8 s stimulus block contained a gap at a random position and subjects were asked to press a button as soon as they heard these gaps. After concern that this paradigm introduces additional amplitude changes within the stimuli, the remaining 10 subjects were scanned using the following alternative paradigm. In each condition, tones were presented continuously for 6.8 s and conditions were presented in a random order. To maintain arousal, subjects were required to identify whether the sound was unmodulated (constant) or modulated (fluctuating) by pressing one of two buttons at the end of each stimulus condition. Each stimulus condition was repeated 40 times, distributed across two sequential imaging runs. The total experimental time was 42 min.

A T_1 -weighted EPI image ($3 \times 3 \times 3$ mm resolution) was also acquired for each subject in the same imaging session. This type of image shows the same tissue distortions as the functional image, but provides enhanced contrast between grey/white matter and CSF, thus enabling visualization of individual auditory cortical morphology.

Data Analysis

For each subject, image data were motion corrected across the two imaging runs, transformed into a standard brain space using template matching, and spatially smoothed with a Gaussian filter of 6 mm, using

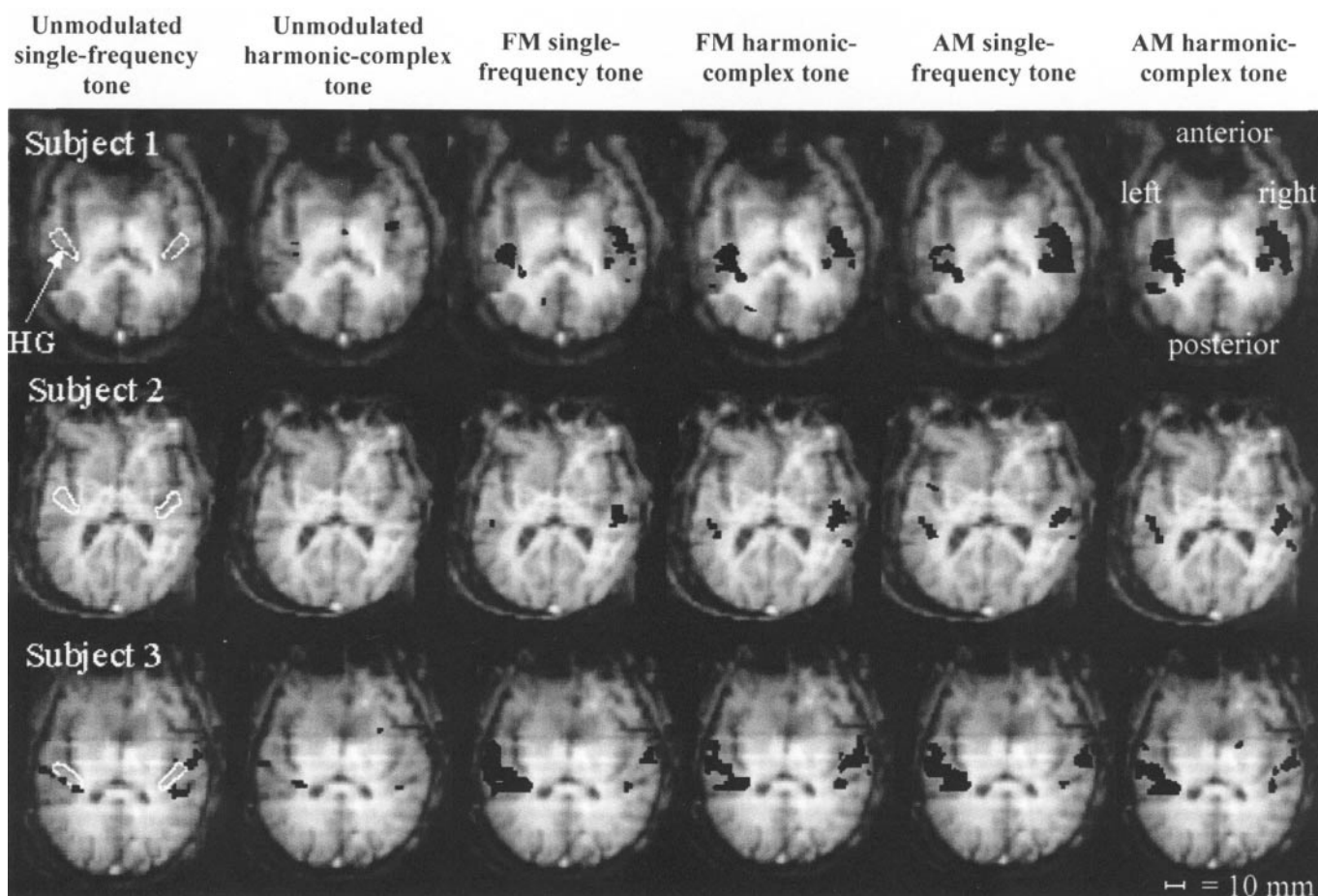


Figure 2. Black areas indicate auditory activation ($P < 0.001$) by the different tonal stimuli for three typical subjects, overlaid onto the individual's normalized structural image. The slice orientation is a 34° oblique axial slice, angled along the supratemporal plane and including HG, whose outline is shown in white on the left-hand image for each subject. The brain slices are displayed in neurological convention (L = L), as illustrated on the top right slice. For an indication of size, a 10mm scale bar is shown in the bottom right.

SPM99 software (www.fil.ion.ucl.ac.uk/spm). Analysis of activation was also performed with SPM99, using a general linear model (Worsley and Friston, 1995). There was no observable difference between the activation patterns for the two different paradigms and data for all 12 subjects were combined in a random-effects approach using a two-stage analysis procedure (Holmes and Friston, 1998). Random-effects analyses are essential for valid population inference about the *typical* effects in fMRI datasets where the inter-scan variability within an imaging session is small in comparison to the variability of responses from subject to subject, as is generally the case in fMRI (McGonigle *et al.*, 2000). Stimulus effects were conducted separately for all subjects, using a first-level, fixed-effects analysis that computed the within-session error variance (residual scan-to-scan variability) as the only component of variance. This first stage used a design matrix that comprised seven variables, one for each stimulus condition. Each variable defined which set of images constituted that particular stimulus condition using a simple vector of 1 s (stimulus on) and 0 s (stimulus off). Statistical contrasts between stimulus conditions were specified by a linear combination of these variables. The outputs of these individual analyses were then entered into a second level that tested the significance of the statistical contrast by assessing the between-session component of variance.

First, we conducted a preliminary examination of the data to determine the typical pattern of auditory-evoked activation by contrasting all six tones against the silent baseline. For this non-hypothesis-driven analysis, we set a conservative probability threshold of $P < 0.05$, correcting for multiple comparisons. Subsequent analyses were performed to determine the following specific issues: (i) tonotopic differences evoked by the spectral difference between the two carrier tones, matched for pitch, (ii) whether there was any topographic segregation of auditory

cortical areas responsive to AM and FM, presented at the same modulation rate, and (iii) whether response magnitude was determined by the type of modulation and in particular, which type of modulation was necessary to evoke the higher activation of non-primary auditory areas observed by Hall *et al.* (Hall *et al.*, 2002). For these analyses, we set the probability threshold to $P < 0.001$ and did not correct for the number of separate multiple comparisons across the entire brain since we were testing a set of specific hypotheses about auditory cortical function.

Results

Subjects were able to discriminate unmodulated from modulated tones with a high degree of accuracy (mean score = 96%, SD = 5%). Data for the two subjects scanned whilst performing the gap detection task were comparable (mean score = 96%, SD = 5%).

The contrast of all tones against silence revealed widespread bilateral auditory activation along the lateral two-thirds of HG and surrounding areas of the STG. Additionally, small clusters of bilateral activation were focused around the central sulcus (36 and 16 voxels in the left and right hemispheres, respectively). The peaks of these clusters occurred at $x = -39$, $y = -24$, $z = 69$ mm in the left hemisphere, and $x = 36$, $y = -36$, $z = 72$ mm in the right. These peaks coincide with the location of sensorimotor cortex. We therefore suggest that these activations were task related and were likely to be evoked by the subjects' button-press response at the end of each stimulus condition.

Figure 2 shows the distribution of activation along the

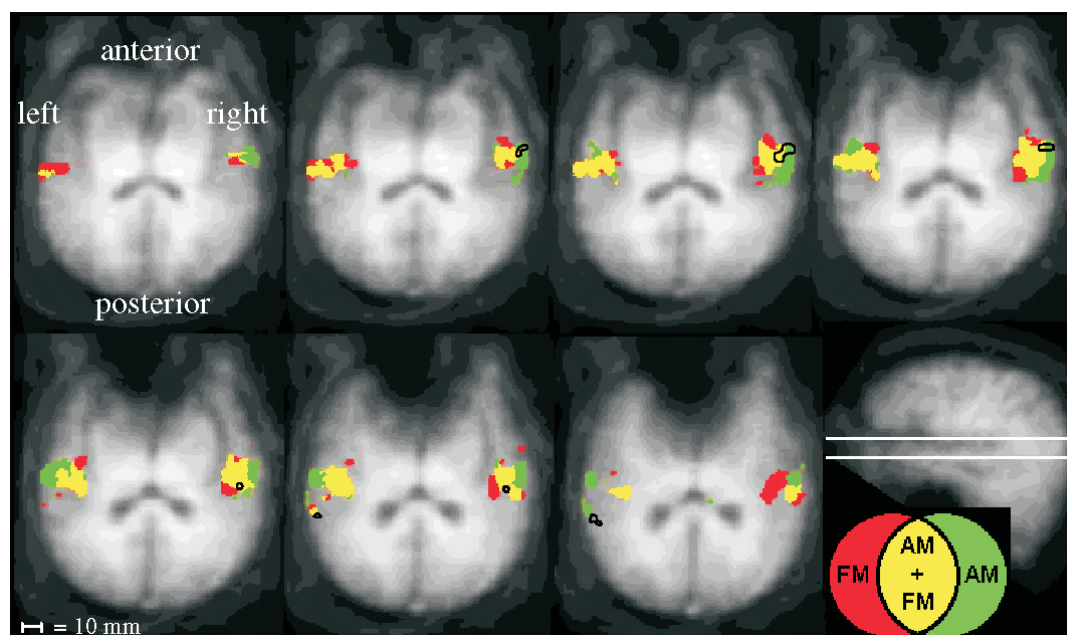


Figure 3. Auditory activation by amplitude and by frequency modulation. Auditory brain areas, shown in red, are more activated by FM than by unmodulated tones ($P < 0.001$). Areas shown in green were more activated by AM than by unmodulated tones ($P < 0.001$). Yellow areas are those where the red and green activated regions are overlapping. Outlined in black are those auditory regions which are significantly more activated by AM than by FM tones ($P < 0.001$). Activation was determined using random-effects group analyses and is overlaid onto the standardized mean image for the 12 subjects. The sagittal view (bottom right) illustrates the slice orientation selected for display (axial slice angled by 34°). Slices are displayed in a descending order, viewed at 2.5mm intervals and are in neurological convention (L = L), as illustrated on the top left-hand slice. A 10mm scale bar is indicated in the bottom left.

supratemporal plane (STP) for separate tone conditions relative to the silent baseline ($P < 0.001$, uncorrected for multiple comparisons). Activation patterns varied across subjects, but the three subjects presented here are representative of the range observed. In general, the unmodulated 300 Hz tone and the unmodulated harmonic-complex tone yielded little or no significant sound-evoked activation. The unmodulated single-frequency tone produced auditory cortical activation in four out of the 12 subjects. The unmodulated harmonic-complex tone produced activation in five out of 12 subjects. In general, when activation was present, it was located on HG and/or in auditory cortical areas posterior and lateral to HG. Both types of modulation generated bilateral auditory activation that incorporated parts of HG and surrounding non-primary areas. Auditory cortical activation was observed for 11 out of 12 subjects for the FM single tone, and for all 12 subjects for the FM harmonic-complex tone, the AM single tone and the AM harmonic-complex tone. For these sounds, activations were observed in medial HG, which includes the putative site of the primary auditory area, and in surrounding non-primary areas.

(i) Differences Between Harmonic-complex and 300 Hz Tones

General effects of the carrier signal were assessed directly by computing the difference between the harmonic-complex and the 300 Hz tones, for each subject, combined across the unmodulated, AM and FM conditions ($P < 0.001$). Five subjects showed no significant differential activation. For the remaining subjects, the greater activation by the harmonic-complex tones was extremely variable in its extent and location. For example, the size of the activation clusters ranged from 1 to 62 voxels; in some subjects occurring only in the left hemisphere, and in others occurring only in the right. When activation was present,

it generally occurred in HG and auditory cortical areas immediately posterior to HG. The contrasts for the individual subjects were then entered into a random-effects group analysis. This group analysis revealed no significant difference between carrier signals ($P < 0.001$). This lack of significant difference between the activations observed for the two carrier signals is probably due to the high degree of inter-subject variability observed and the conservative nature of the analysis.

(ii) Topographical Segregation of AM and FM Responses

A number of tests were carried out to localize the auditory cortical areas that were sensitive to AM and FM. We also conducted a stringent test for segregation between these responses by seeking areas that were specifically responsive to AM or FM, but not to both. First, we generated a thresholded statistical map of activation for each type of modulation relative to the unmodulated stimuli ($P < 0.001$ uncorrected for multiple comparisons) and report the topographical organization of the two resulting activation maps. Second, we directly computed the differential activation by AM relative to FM and FM relative to AM (again $P < 0.001$ uncorrected for multiple comparisons). Finally, we used unthresholded maps of the standardized magnitudes (the beta parameters for each stimulus condition extracted from the general linear model) to generate 2-D plots of the spatial distribution of response magnitudes.

First, the effect of modulation was tested by contrasting each modulated tone against its unmodulated counterpart. The contrast between modulated and unmodulated stimuli was computed for each subject, for the harmonic-complex and single-frequency tones combined. These contrasts were then entered into a random-effects group analysis. Analyses were computed separately for the AM and FM conditions. The results shown in Figure 3 demonstrate that both types of modulation

generated significantly greater auditory cortical activation than did the unmodulated tones. The activation maps overlapped one another by ~55%. Common areas with modulation sensitivity included HG and a region immediately posterior to it, with this posterior region extending towards the lateral convexity of the STG (shown in yellow in Fig. 3). Sensitivity to AM involved almost 20% more voxels than the sensitivity to FM (shown in green in Fig. 3) and it generally extended to the lateral convexity in the region posterior to HG, as well as ventrally towards the STS. The sensitivity to FM included a small portion of left medial HG (the site of the putative primary auditory cortex), plus a region on the posterior border of right HG which undercut HG itself (shown in red in Fig. 3).

We then directly computed the differential activation by AM relative to FM ('AM-FM') and by FM relative to AM ('FM-AM') to determine where responses to AM and FM might significantly differ from one another. The subtraction of AM from FM conditions did not reach significance. Results for the 'AM-FM' contrast did reach significance and are shown by the areas outlined in black in Figure 3. The 'AM-FM' contrast identifies those voxels in the brain that show any one of the following states: (i) a significant effect of AM relative to unmodulated tones, but no effect of FM relative to unmodulated tones, (ii) a significant effect of modulated relative to unmodulated tones for both AM and FM, but with the effect being greater for AM than FM, and (iii) other voxels may show no significant difference between modulated and unmodulated tones, but nevertheless the response to AM is significantly greater than FM tones. These effects were shown by a small number of voxels, which were located in non-primary auditory cortex bilaterally. Brain areas where the 'AM-FM' contrast overlapped with both the 'FM-unmodulated' and the 'AM-unmodulated' maps indicated those areas attributable to state (ii) above, where both AM and FM are activated relative to the unmodulated tones, but AM is significantly more so. These areas of co-activation can be seen in Figure 3 as those that are outlined in black and coloured yellow and are three voxels with a peak at 60 -12 3 mm, and one voxel at 54 -27 6 mm, both on the right planum temporale. Brain areas where the 'AM-FM' activation map overlapped only with the 'AM-unmodulated' map indicated those areas where AM had a specific effect. A single area met the criterion for responding *only* to AM and can be found in Figure 3, outlined in black and coloured green. This area comprises three voxels in the right planum temporale posterior and lateral to the main axis of HG, with a peak at 63 -12 3 mm. Relative to the size of the overlapping activation between 'AM-unmodulated' and 'FM-unmodulated' (83 voxels in the left and 88 voxels in the right hemisphere, shown in yellow in Fig. 3), the AM-specific area is very small. The 'AM-FM' activation map identified a further three voxels in the left planum temporale (with a peak at -63 -42 9 mm), but this region was not activated by 'AM-unmodulated', and so the AM-dependent response is different from that shown by the right planum temporale.

Second, the spatial distribution of the activation by modulation was mapped using the model response estimates for these conditions. Bilateral windows were specified that incorporated voxels from [39] to [66] mm in the *X* dimension and -45 to +12 mm in the *Y* dimension to include the entire axis of HG plus the activated posterior and lateral auditory regions. The plane of section included regions along the supratemporal plane, and thus was angled by 34° using the T_1 -weighted brain image for the group. The beta parameters from the random-effects analysis reflect a standardized magnitude of individual stimulus effects, and these were extracted for all voxels within the windows. Beta

parameters are derived from the general linear model implemented in SPM99 and correspond to the model predictions of the magnitude of the condition-specific activation. We assume that the standard errors differ little across the region of interest because the data have been spatially smoothed. The plots revealed a spatially coherent ridge (peak value = 1.64 for AM harmonic-complex, at $x = 64$, $y = -12$, $z = -12$ mm) in a region posterolateral to HG that was present in the two hemispheres for both AM and FM tones (Fig. 4*(i)*). The ridge represents an elevated response, whose peak was focused on the lateral part of the STG, but also incorporated lateral HG. Its spatial location was highly similar for both types of modulation, although its magnitude appeared greater for AM than FM stimuli. In contrast, the magnitudes for the unmodulated harmonic-complex tone did not exceed the range -0.34 to 0.48 and the plots revealed a 'flat landscape' across the STP.

In summary, although AM activated a somewhat larger region of the auditory cortex than FM and extended to the lateral edge of the STG, there was no clear segregation of the foci (peaks) of activated cortex between the two types of modulated stimuli and so we conclude that sensitivity to AM and FM largely involves common auditory regions. As a final point, we draw attention to the correspondence between the posterolateral location of the high response to modulation obtained here and that obtained in a previous study (Hall *et al.*, 2002) (Fig. 4*(ii)*). Thus, the present results replicate the previous finding that an especially high response to a spectro-temporally modulated tone occurs in a posterolateral region of the non-primary auditory cortex.

(iii) Effect of Modulation on Response Magnitude

The activation maps shown in Figure 3 and the plots of the response magnitude estimates shown in Figure 4*(i)* suggest that the AM tone elicits greater activation than the FM tone. This hypothesis was statistically tested in two ways. First, we measured the condition-specific effects on the mean signal magnitude within a region of activation that showed a significant response ($P < 0.001$) to *both* amplitude- and frequency-modulated tones relative to the unmodulated tones. In a second, more stringent, test we contrasted the AM against the FM conditions in a random-effects group analysis for each and every voxel in the STG.

The defined region of activation used in the first analysis corresponds to the yellow region presented in Figure 3 and incorporates part of the posterolateral non-primary auditory region. For this region, a mean time series was extracted for each subject using the unsmoothed image data. Time series were corrected for any low-frequency signal drift up to a maximum frequency of 0.46 cycles per minute and, for each subject, the mean percentage signal change relative to the silent baseline was used as a normalized measure of each condition-specific effect (Fig. 5). An analysis of variance revealed that the AM tones generated significantly greater response magnitude than the FM tones [$F(1,115) = 13.4$, $P < 0.001$].

The random-effects analysis revealed a greater response to AM in bilateral auditory cortex ($P < 0.001$). These effects were small at this threshold, being three voxels in size on the left and four voxels on the right, but on both sides were located in lateral non-primary cortex. The differential activation was located at $x = -63$, $y = -42$, $z = 9$ mm and $x = 60$, $y = -12$, $z = 3$ mm, respectively ($P < 0.001$). In the right hemisphere, this activation was located within the yellow shaded region in Figure 3. These results indicate that, while both types of modulation strongly activated lateral parts of HG and posterolateral regions, greater

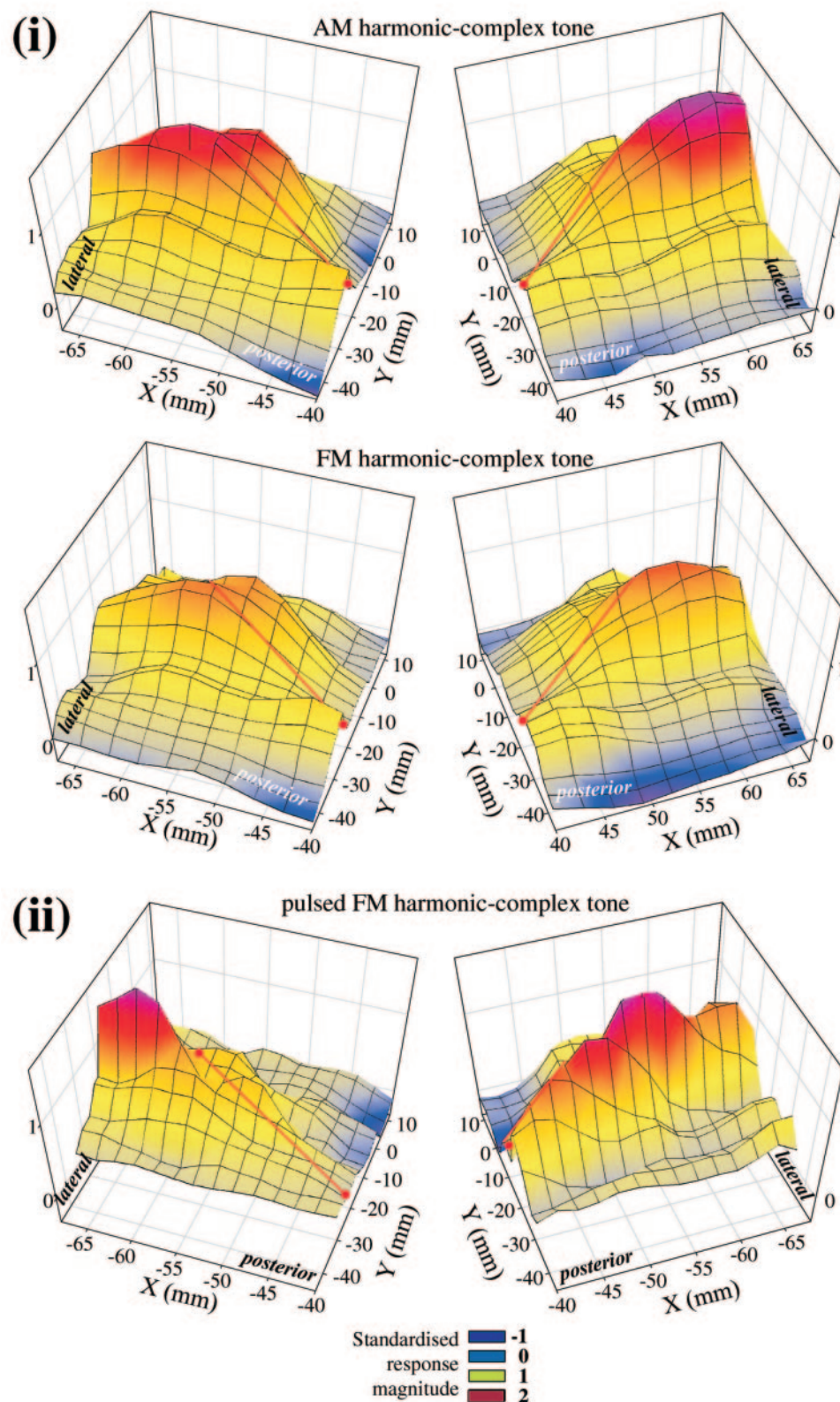


Figure 4. Plots of the response magnitude for AM and FM harmonic-complex tones in a region of the left and right auditory cortex located on the STP, including HG and immediately adjacent areas. The views are displayed in neurological convention (i.e. the left hemisphere is shown in the left panel) with lateral and posterior boundaries labelled. The orientation of the long axis of HG is plotted as a red line, where the end points are defined by the 50–75% probability contour for HG (Penhune *et al.*, 1996). (i) The plots for the AM and FM harmonic-complex tones used in the present study reveal a salient bilateral peak in the auditory region. All peaks are located posterior and lateral to HG, but the elevated response also extends into the lateral part of HG itself. These plots also indicate a greater bilateral posterolateral response to the AM than to the FM tone. (ii) Data reported by Hall *et al.* (Hall *et al.*, 2001) for a pulsed FM harmonic-complex tone, plotted for the same region of the STP as in (i). Again, bilateral peaks of auditory activation in the posterolateral region were found, extending into lateral HG. The distribution of the response magnitudes are surprisingly consistent, given the different subjects, stimuli and scanning regime.

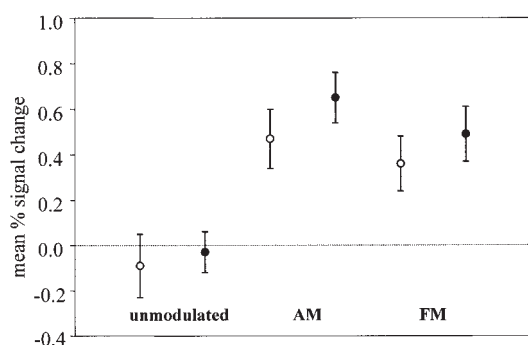


Figure 5. Effect of each tone stimulus on the mean response magnitude within an activated auditory region. This region included all those voxels that displayed significant effects of both amplitude and frequency modulation, relative to the unmodulated tones and corresponds to the yellow area shown in Figure 3. The mean percentage signal change was calculated for each tone stimulus relative to the silent baseline, for all subjects. Open circles denote the single-frequency tones and filled circles denote the harmonic-complex tones. Error bars denote the 95% confidence limits for the mean.

activation was evoked by the variation in amplitude, than in frequency. Moreover this differential activation was focused around those non-primary lateral auditory areas close to the lateral convexity of the STP on or behind HG.

Discussion

The present study revealed a widespread sensitivity to AM and FM in primary and non-primary auditory cortical fields. While both types of modulation more strongly activated lateral parts of HG and posterolateral regions relative to unmodulated tones, greater magnitude of activation was evoked by the variation in amplitude, than by variation in frequency. The overriding pattern of activation was that of co-localized activation by AM and FM, although a small part of the posterolateral region in the right hemisphere responded specifically to AM, and not to FM.

Lack of Activation by Unmodulated Tones

The present study revealed little or no activation to unmodulated stimuli relative to the silent baseline for more than half of the subjects scanned (see Results). Previous fMRI studies have revealed robust auditory cortical activation for unmodulated 300 Hz tones, using a comparable stimulus duration and sound presentation level (Hall *et al.*, 2002; Hart *et al.*, 2002). A key methodological difference between these two studies and the present study is the fact that, here, the stimuli were presented continuously, rather than pulsed on and off. Presenting the stimuli as a train of sounds introduces temporal variation into the stimulus epoch. It has been shown that temporally varying stimuli produce more auditory cortical activation than do those that are either unmodulated (Hall *et al.*, 2002) or have a slower temporal variation (Zatorre and Belin, 2001). The presence of temporal variation within the sound may therefore facilitate the detection of activation by unmodulated tones. Without any temporal variation, unmodulated tones may evoke only a small change in the fMRI response, which in some subjects does not exceed the statistical threshold for detection.

Effect of the Harmonic Structure in the Sound

When the harmonic-complex and the 300 Hz tones were directly compared in a random-effects group analysis (for unmodulated and modulated conditions combined), no significant difference was found between carrier signals. This finding is in contrast to data presented by Hall *et al.* (Hall *et al.*, 2002), who showed that,

as spectral complexity was increased, by adding five harmonics to a single frequency tone, activation increased in primary and non-primary auditory cortex. Hall and her colleagues found a high degree of overlap of the areas responsive to spectral and temporal complexity, but activation induced by the temporal cues was stronger than that induced by spectral cues, as indicated by higher magnitude signal differences and *T* scores. In the present study, for each condition (unmodulated, FM, AM), the mean magnitude of the signal (Fig. 5) was always greater for harmonic-complex tones than for single frequency tones. For AM, the harmonic-complex produced a 0.65% signal increase relative to the silent baseline and the single tone produced a 0.47% signal increase. Moreover, for seven of the 12 subjects, the effect of the harmonic-complex tone did reach statistical significance in an individual subject analysis. Therefore, the null result arising from the random-effects group analysis is likely to be due, at least in part, to the high degree of variability in the size and location of the effect observed between subjects.

Topographical Segregation of AM and FM Responses?

Differential activation by AM relative to FM which was unique to AM occurred in three voxels located in a small region of the right posterolateral auditory cortex. We were unable to identify any cortical regions that were specifically FM-dependent. Given that the co-localized activation was by far the dominant pattern of activation, we conclude that the activations by AM and FM broadly overlap. This is at least consistent with the notion that AM and FM stimuli activate common neuronal populations [see Introduction (Mäkelä *et al.*, 1987; Eggermont, 1994; Gaese and Otswald, 1995; Saberi and Hafter, 1995; Liang *et al.*, 2002)]. The fMRI data presented are unable to determine where such a common processing pathway may arise; be it at the cortex or at more peripheral sites within the auditory pathway.

Alternatively, if populations of auditory cortical neurons acted primarily as groups of frequency analysers (filters) tuned to different sinusoidal frequencies, the low amount of segregation could reflect the spectral similarity of the stimuli. Figure 1(*i*) illustrates the frequency components of the AM and FM tones. The principal frequency components for both FM and AM tones are centred on the same auditory channel and hence would stimulate common populations of frequency-sensitive auditory cortical neurons.

The AM Stimulus Used in the Present Study Is More Potent than the FM Stimulus

Whilst the present study found no clear spatial segregation of areas responsive to either type of modulation, greater auditory activation overall was observed to the AM than the FM stimuli. Moreover, this AM/FM difference was present for both single frequency and harmonic complex carriers. Modulated stimuli were as closely matched as possible for loudness, spectrum and rate and depth of modulation (as described in the Methods section) and so it is unlikely that these cues would underlie the activation differences. The absolute level of the AM stimuli was 1 dB SPL greater than that of the FM stimuli when quantified post-experimentally. This small discrepancy between the overall energies of the two stimuli is unlikely to be sufficient to cause the difference observed between activation to the AM and FM stimuli. The difference in magnitude observed in the present study between the AM and FM harmonic-complex tones was 0.16% signal change. Brechmann *et al.* (Brechmann *et al.*, 2002) demonstrate, for an area of cortex including the primary area and lateral non-primary cortex, that a 30 dB SPL increase in the sound level of FM tones (from 72 to 102 dB) results in a com-

parable 0.15% signal change. This suggests that an increase in sound level of 1 dB SPL is not sufficient to produce the difference in the measured response.

It is possible that AM is simply a more potent stimulus than FM, and that the posterolateral non-primary auditory cortical regions are more sensitive to changes in amplitude than changes in frequency over time. This is consistent with data presented by Eggermont (Eggermont, 1994) from cat primary auditory cortex showing that, for many units, the response was strongest for sinusoidal AM of a carrier tone at the best frequency and weaker, but similar in type, for sinusoidal FM. There is also some psychophysical evidence suggesting that at low modulation rates, where all the frequency components lie within a critical band, FM is less detectable than AM (Zwicker, 1952). Although the AM and FM tones in the present study were both perceived to be clearly modulated.

Notes

MR scanning facilities were provided by the Magnetic Resonance Centre, University of Nottingham. We thank Kay Head and John Foster for operating the 3 T MR scanner.

Address correspondence to Dr Deb Hall, MRC Institute of Hearing Research, University Park, Nottingham NG7 2RD, UK. Email: debbie@ihr.mrc.ac.uk.

References

- Binder J, Frost JA, Hammeke TA, Bellgowan PSF, Springer JA, Kaufman JN, Possing ET (2000) Human temporal lobe activation by speech and nonspeech sounds. *Cereb Cortex* 10:512–528.
- Brechmann A, Baumgart F, Scheich H (2002) Sound-level-dependent representation of frequency modulations in human auditory cortex: a low-noise fMRI study. *J Neurophysiol* 87:423–433.
- Burkhard MD, Sachs RM (1975) Anthropometric manikin for acoustic research. *J Acoust Soc Am* 58:214–222.
- Eggermont JJ (1994) Temporal modulation transfer functions for AM and FM stimuli in cat auditory cortex. Effects of carrier type, modulating waveform and intensity. *Hear Res* 74:51–66.
- Gaese BH, Otswald J (1995) Temporal coding of amplitude and frequency modulation in the rat auditory cortex. *Eur J Neurosci* 7:438–450.
- Giraud AL, Lorenzi C, Asburner J, Wåle J, Johnsrude I, Fracowiak R, Kleinschmidt A (2000) Representation of the temporal envelope of sounds in the human brain. *J Neurophysiol* 84:1588–1598.
- Griffiths TD, Buchel C, Fracowiak RS, Patterson RD (1998) Analysis of temporal structure in sound by the human brain. *Nat Neurosci* 1:422–427.
- Hall DA, Haggard MP, Akeroyd MA, Palmer AR, Summerfield AQ, Elliott MR, Gurney E, Bowtell RW (1999) Sparse temporal sampling in auditory fMRI. *Hum Brain Mapp* 7:213–223.
- Hall DA, Summerfield AQ, Gonçalves MS, Foster JR, Palmer AR, Bowtell RW (2000) Time-course of the auditory BOLD response to scanner noise. *Magn Reson Med* 43:601–606.
- Hall DA, Haggard MP, Summerfield AQ, Akeroyd MA, Palmer AR, Bowtell RW (2001) Functional magnetic resonance imaging measurements of sound-level encoding in the absence of background scanner noise. *J Acoust Soc Am* 109:1559–1570.
- Hall DA, Johnsrude IS, Haggard MP, Palmer AR, Akeroyd MA, Summerfield AQ (2002) Spectral and temporal processing in human auditory cortex. *Cereb Cortex* 12:140–149.
- Harms MP, Melcher JR (2002) Sound repetition rate in the human auditory pathway: representations in the waveshape and amplitude of fMRI activation. *J Neurophysiol* 88:1433–1450.
- Hart HC, Palmer AR, Hall DA (2002) Heschl's gyrus is more sensitive to tone level than non-primary auditory cortex. *Hear Res* 171:177–190.
- Heil P, Rajan R, Irvine DRF (1992) Sensitivity of neurons in cat primary auditory cortex to tones and frequency-modulated stimuli. II: Organisation of response properties along the 'isofrequency' dimension. *Hear Res* 63:135–156.
- Holmes AP, Friston KJ (1998) Generalisability, random-effects and population inference. *Neuroimage* 7:S754.
- Houtgast T, Steeneken HJM (1985) A review of the MTF concept in room acoustics and its use for estimating speech intelligibility in auditoria. *J Acoust Soc Am* 77:1069–1077.
- Kay RH (1982) Hearing of modulation in sounds. *Physiol Rev* 62:894–975.
- Liang L, Lu T, Wang X (2002) Neural representations of sinusoidal amplitude and frequency modulations in the primary auditory cortex of awake primates. *J Neurophysiol* 87:2237–2261.
- Mäkelä JP, Hari R, Linnankivi A (1987) Different analysis of frequency and amplitude modulations of a continuous tone in the human auditory cortex: a neuromagnetic study. *Hear Res* 27:257–264.
- McGonigle DJ, Howseman AM, Athwal BS, Friston KJ, Frackowiak RSJ, Holmes AP (2000) Variability in fMRI: an examination of intersession differences. *Neuroimage* 11:708–734.
- Mendelson JR, Schreiner CE, Sutter ML, Grasse KL (1993) Functional topography of cat primary auditory cortex: responses to frequency-modulated sweeps. *Exp Brain Res* 94:65–87.
- Miller KL, Luh WM, Liu TT, Martinez A, Obata T, Wong EC, Frank LR, Buxton RB (2001) Nonlinear temporal dynamics of the cerebral blood flow response. *Hum Brain Mapp* 13:1–12.
- Møller AR (1971) Unit responses in the rat cochlear nucleus to tones of rapidly varying frequency and amplitude. *Acta Physiol Scand* 81:540–556.
- Moore BCJ, Glasberg BR, Baer TA (1997) A model for the prediction of thresholds, loudness and partial loudness. *J Audio Eng Soc* 45:224–240.
- Moore BCJ, Vickers DA, Baer T, Launer S (1999) Factors affecting the loudness of modulated sounds. *J Acoust Soc Am* 105:2757–2772.
- Penhune VB, Zatorre RJ, Macdonald JD, Evans AC (1996) Inter-hemispheric anatomical differences in human primary auditory cortex: probabilistic mapping and volume measurement from magnetic resonance scans. *Cereb Cortex* 6:661–672.
- Rees A, Møller AR (1983) Responses of neurons in the inferior colliculus of the rat to AM and FM tones. *Hear Res* 10:301–330.
- Regan D, Tansley BW (1979) Selective adaptation to frequency-modulated tones: evidence for an information-processing channel selectively sensitive to frequency changes. *J Acoust Soc Am* 65:1249–1257.
- Saberi K, Hafter ER (1995) A common neural code for frequency and amplitude-modulated sounds. *Nature* 374:537–539.
- Thivard L, Belin P, Zilbovicius M, Poline JB, Samson Y (2000) A cortical region sensitive to auditory spectral motion. *Neuroreport* 11:2969–2972.
- Urbas J, Müller-Preuss P, Fastl H, Hesse A, Schorer E (1986) Selective responses of monkey auditory cortex neurons to various parameters of amplitude modulation (AM). *Neurosci Lett Suppl* 26:S407.
- Wakefield GH, Viemeister NF (1984) Selective adaptation to linear frequency modulated sweeps: evidence for direction-specific FM channels? *J Acoust Soc Am* 75:1588–1592.
- Whitfield IC, Evans EF (1965) Responses of auditory cortical neurons to stimuli of changing frequency. *J Neurophysiol* 28:656–672.
- Worsley KJ, Friston KJ (1995) Analysis of fMRI data revisited – again. *Neuroimage* 2:173–181.
- Zatorre RJ, Belin P (2001) Spectral and temporal processing in human auditory cortex. *Cereb Cortex* 11:946–953.
- Zwicker E (1952) Die grenzen der hörbarkeit der amplitudenmodulation und der frequenzmodulation eins tones. *Acustica* 3:125–133.